



DISCOVER FREEDOM TO CREATE



CHERRY HILLS

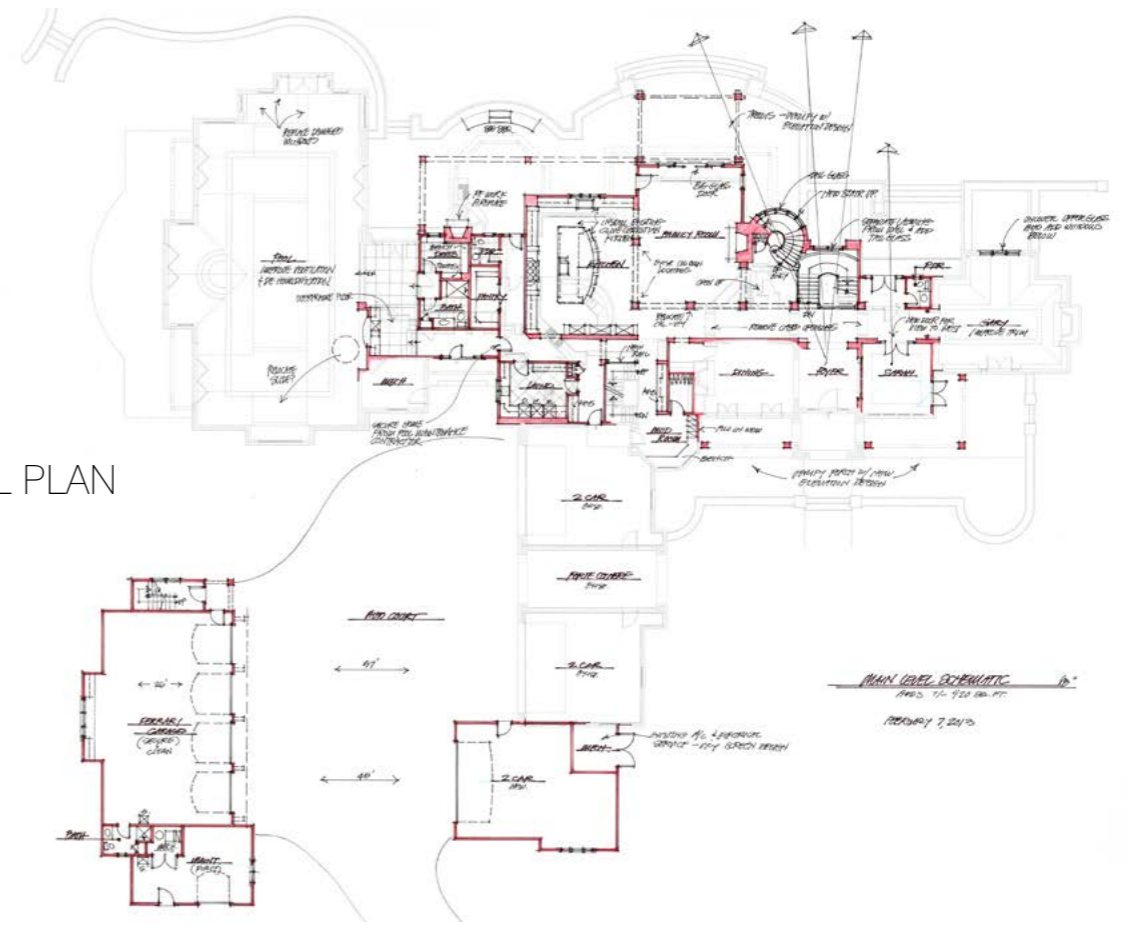
COLORADO - USA

MARCH 2023
BROMBAL MAG #09

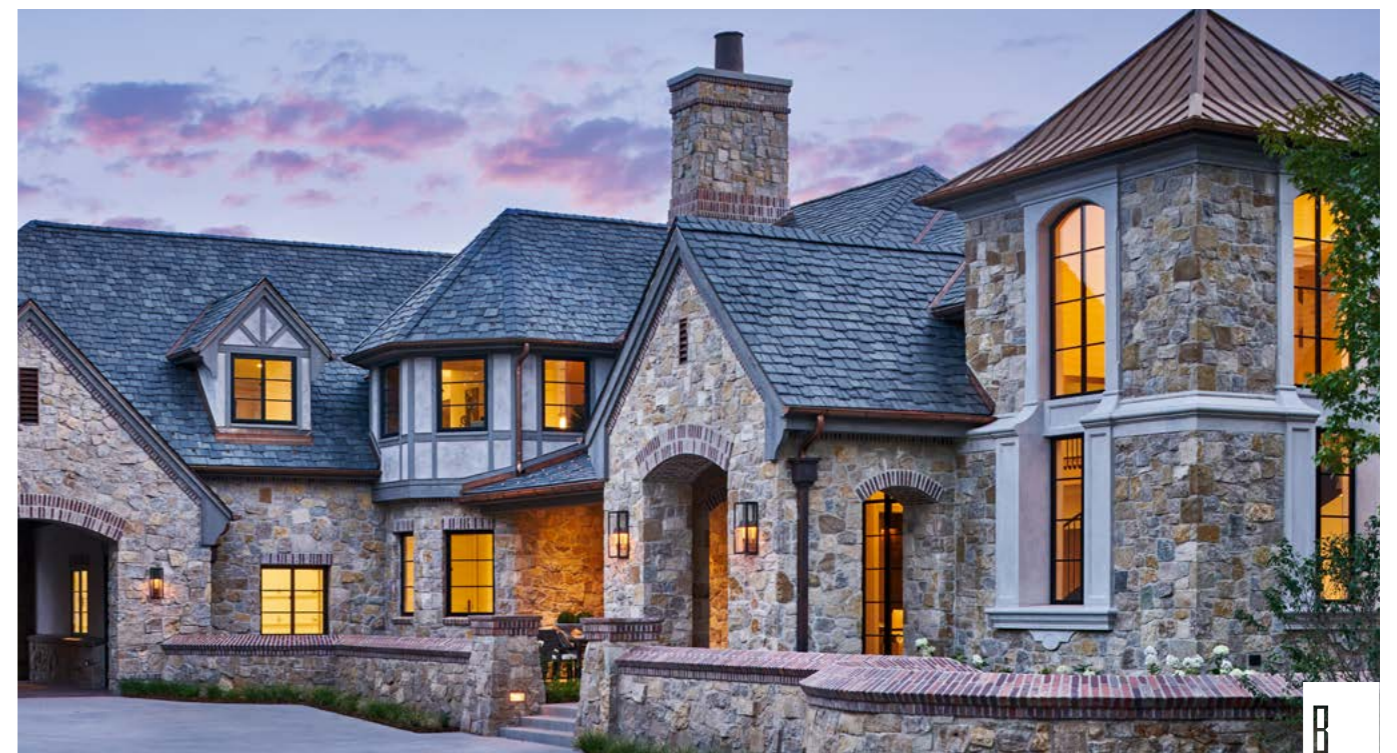


IDEA

Situated on a generous plot of land with extraordinary vistas, a poorly built home plagued by outdated interiors and an undesirable floor plan was overdue for updating. To no one's great surprise, a modest effort to improve "just a couple of things" soon segued into an entire home renovation resulting in dramatically improved flow, increased daylighting, and gorgeous detailing throughout.



MAIN LEVEL PLAN



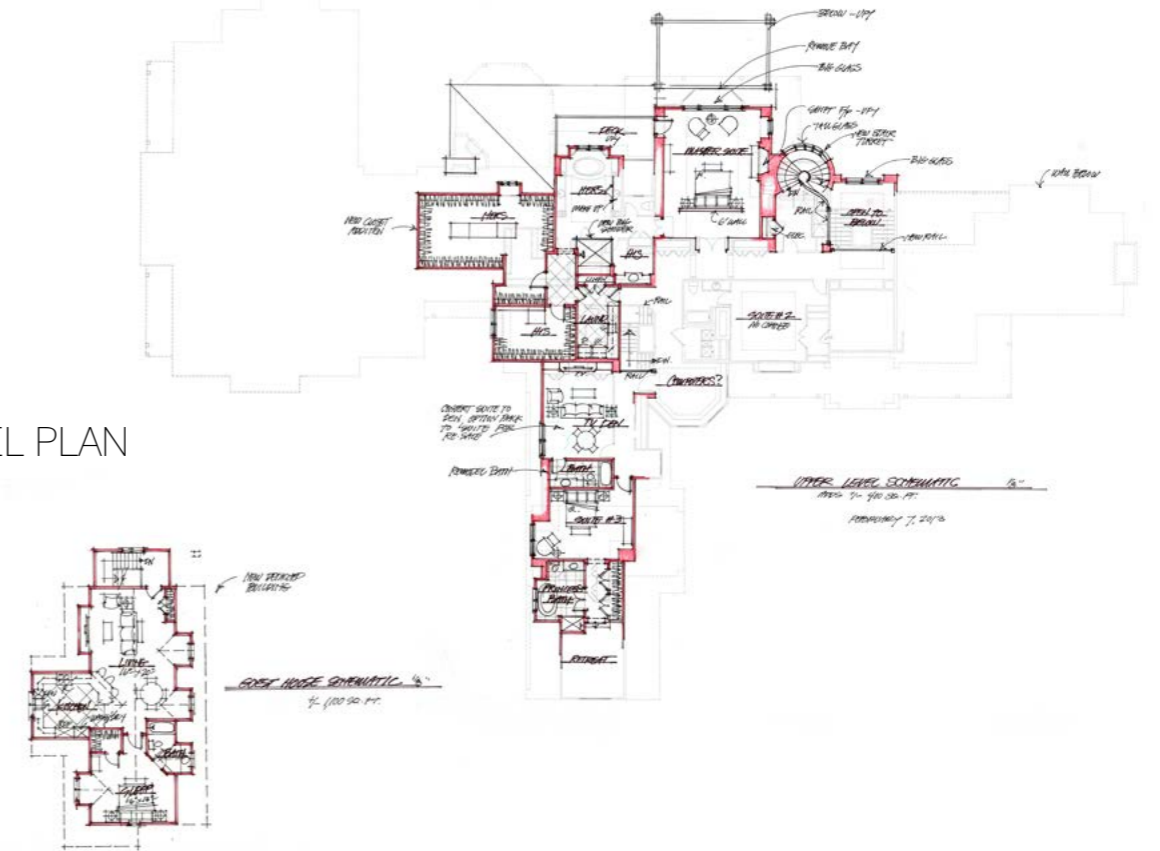


PROJECT SCOPE

The design team at KGA Studio was intent on recovering the authenticity of the home, by both enhancing the unobstructed mountain views and highlighting beauty inside and outside the residence. The exterior transformation began with the selection of Italian luxury windows and doors, 100% custom fabricated by Brombal. By creating new, and enlarging existing window openings, especially on the western elevation, new views and natural daylighting reveal themselves.

Rounding out the overall exterior composition of this breathtaking residence is Indiana limestone façade, a Vermont slate roof, and copper gutters, each complimenting perfectly the elegant black frames of the thermally broken steel window system.

UPPER LEVEL PLAN



PROJECT SCOPE



The interior was opened up and revitalized, with the main living spaces now seamlessly flowing together to create the perfect environment for entertaining. You only get one chance to make a first impression; and now when one walks through the entry they're greeted with ample natural light and spectacular views afforded by the expansive floor-to-ceiling windows surrounding a floating spiral staircase. The delicate, filigree profile of the Brombal

windows perfectly enhances the understated elegance of the home, both with the narrowness of the operable sashes and the 3/4" flat horizontal grid bars.

An inviting yet intriguing second building was transformed: the addition of a complimentary carriage house with a 4-car garage underneath, and an auxiliary second-floor dwelling above, was driven by the client's desire for more garage space to house a collection of exotic cars.



DISCOVER
FREEDOM
TO CREATE



"Brombal was selected for the ability to custom build each and every window as well as the thermally broken properties of the construction. The appearance always plays a role as well when striving for an authentic look."

Paul Mahony

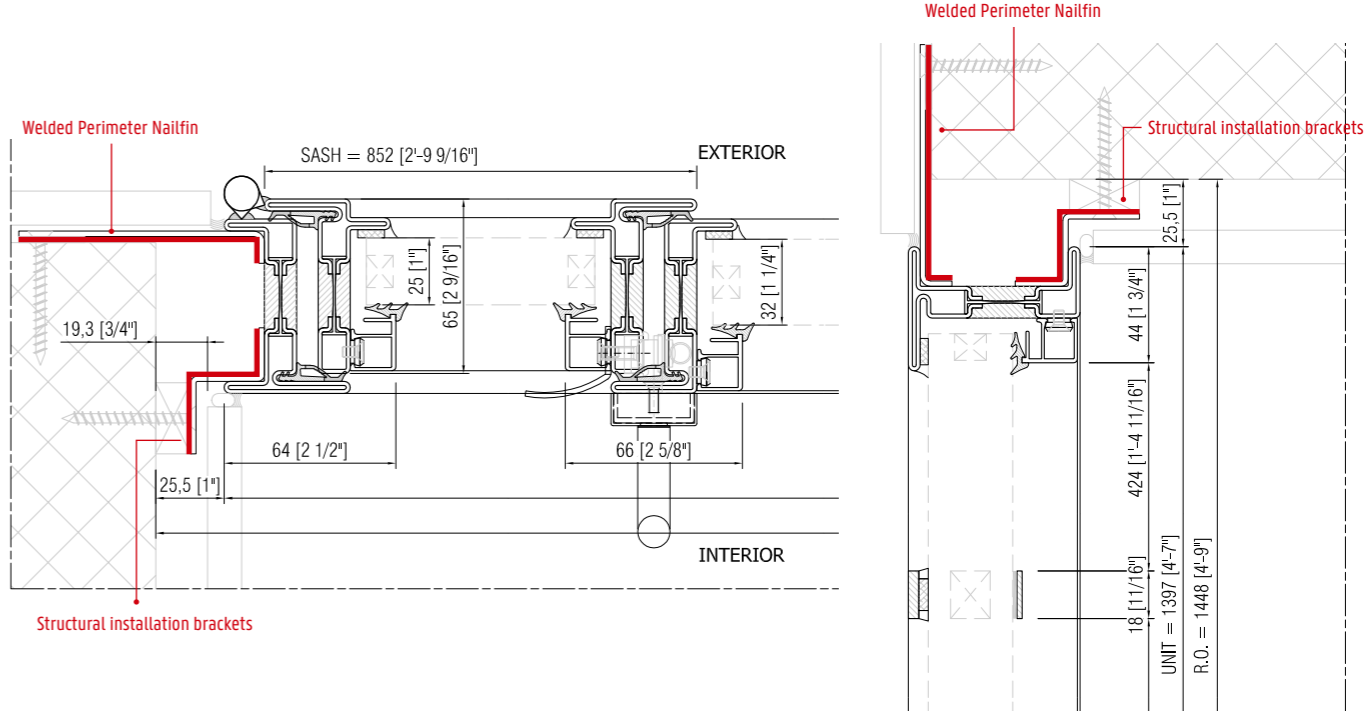
Paul Mahony, AIA CGP, KGA Studio Architects



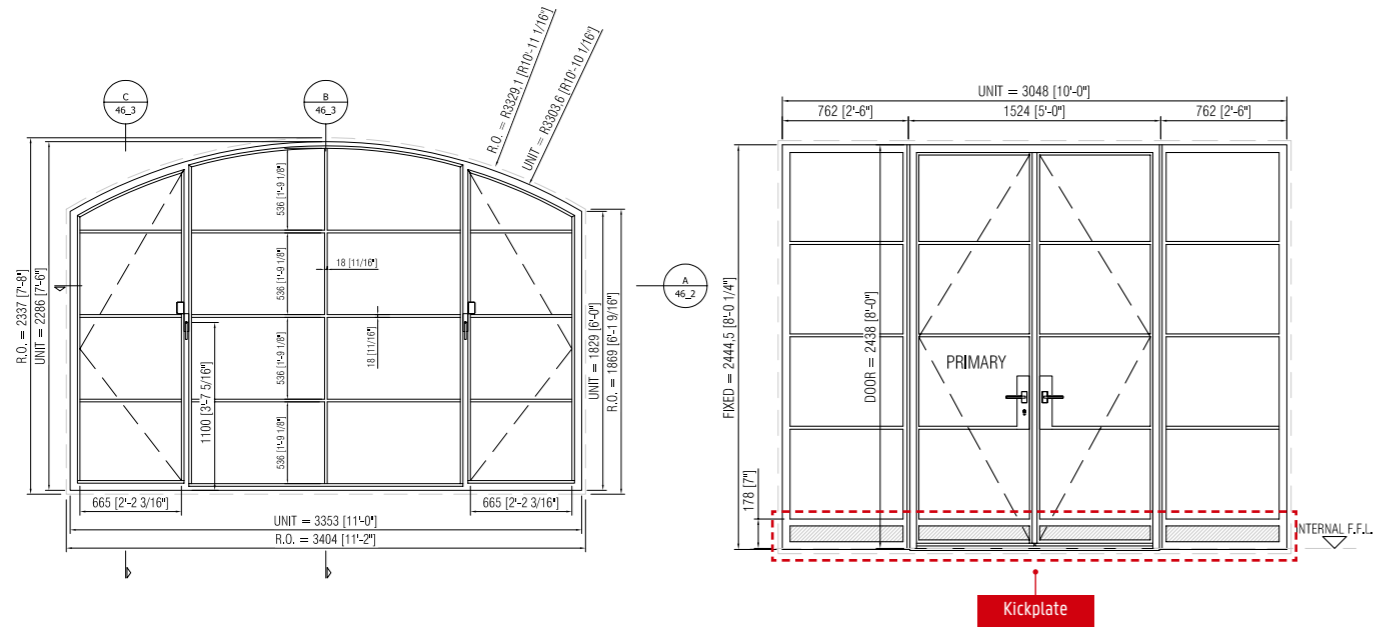


DISCOVER FREEDOM TO CREATE

Brombal's pressed metals department served a critical role in developing a custom attachment detail that helped anchor the heavy windows and doors to the structure. This type of synergy between architect and window fabricator is what Brombal specializes in, contributing to high-quality, sound construction techniques leading to long-lasting results and reliable performance. No two projects are the same, and being agile with modifications and customization is the only proven path to the perfect solution.

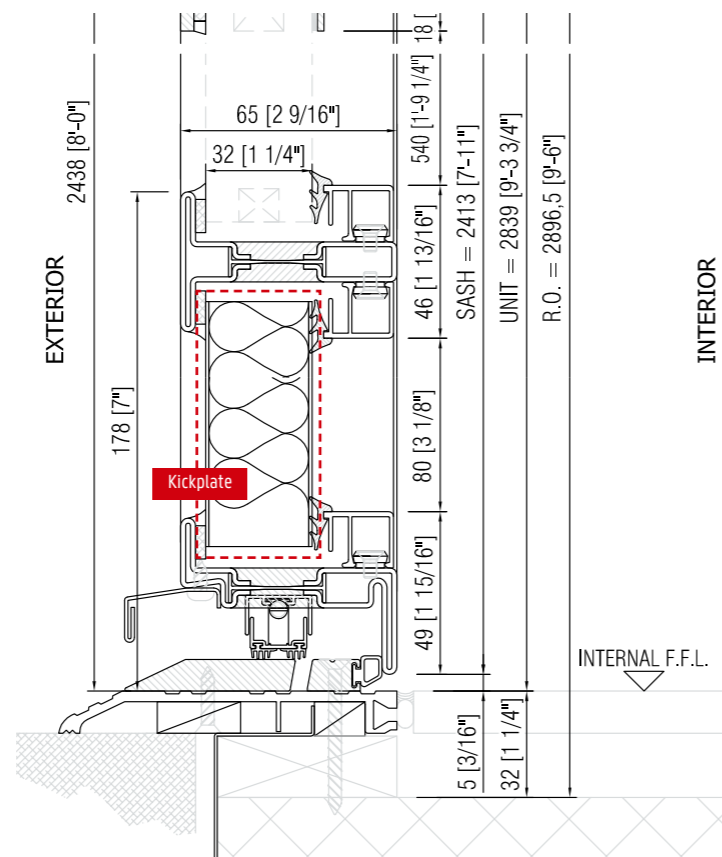


KICK PLATES



A classic design feature is the small insulated kickplate located at the bottom of all the double door combinations. Considering the small profile of Brombal's steel doors, the architect wanted a little extra

at the base to both shield the glass from any impact, but also to protect it against water-staining splashes brought about during rainy spells.



Another compelling feature of this home is the indoor swimming pool with even more terrific views of the dynamic landscape. To best protect their investment, stainless steel was utilized for the windows and doors around this location, for it possesses superior natural resistance when located in corrosive environments. To further bolster this resistance, Brombal applies a special combination of primer and paint to all units needing extra protection. In sum, thanks to the architect's vision, a well-curated selection of materials, and flawless execution by the builder, this home's classic grandeur has been well-restored. It's a timeless design that will stand for decades – a genuine legacy project ready for the next generation and beyond.



TESTIMONIAL

"The drawings were detailed and the communication was fluid - The shop drawing review process was lengthy but collaborative to ensure we were getting the product we needed. Always professional and courteous."

Paul Mahony

Paul Mahony, AIA CGP, KGA Studio Architects

PROJECT TEAM

ARCHITECT

KGA Studio Architects
Paul Mahony, AIA, CGP

BUILDER

Bond General Contractors

INTERIOR DESIGNER

Jeffrey Allen Marks Interiors

PHOTOGRAPHER

David Patterson Photography

LANDSCAPE DESIGN

Designscapes Colorado

DEALER

Veranda View

BROMBAL

LUXURY METAL WINDOWS AND DOORS

BROMBAL HQ

discoverbrombal.com
brombal@discoverbrombal.com
Phone: +39 0423 566189

BROMBAL USA NORTH AMERICA

brombalUSA@discoverbrombal.com
Phone: +1 (203) 283 - 4550

BROMBAL OCEANIA

NEW ZEALAND - Auckland
brombalNZ@discoverbrombal.com
Phone: +64 216 61016

AUSTRALIA - Sydney
brombalAU@discoverbrombal.com
Phone: +61 431 622 443

BROMBAL UK

brombalUK@discoverbrombal.com
Phone: +39 351 234 2855

BROMBAL ASIA

HONG KONG - Tsuen Wan
brombalASIA@discoverbrombal.com

CHINA - Shanghai
brombalASIA@discoverbrombal.com

BROMBAL INDIA

brombalINDIA@discoverbrombal.com
Phone: +91 9711021393

Discover freedom to create

FOLLOW US ON:

